

Using Internet-based Maps and Images

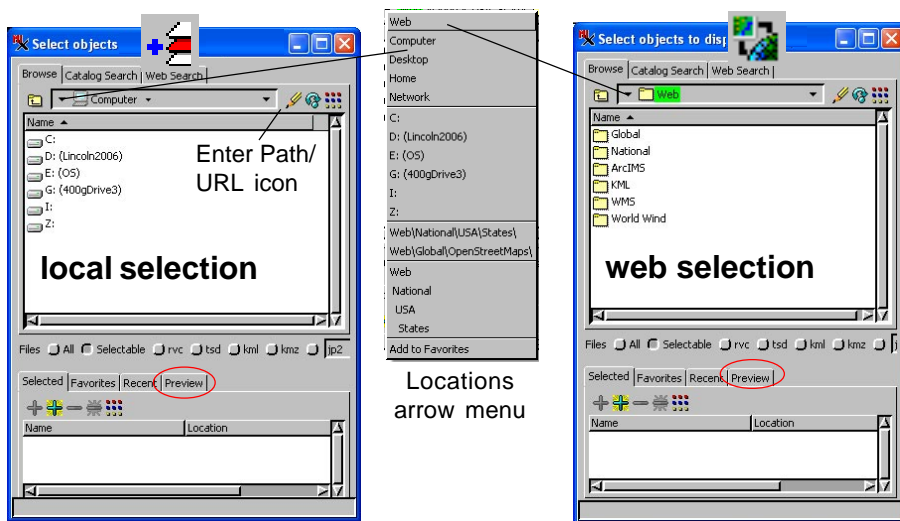
(Custom Google and Bing Maps and Google Earth structured tilesets, KML, WMS, and ArcIMS layers)

Selection of Internet-based map and image layers is integrated with local geodata selection and can be accessed by the Add Web Layers or Add Objects icon or from the Add/Layer menu cascade in the Display or Layer Manager. The Add Web Layers icon defaults to web layer selection while the Add Objects icon defaults to your local file structure. Side-by-side comparison of the two default selection windows (shown below) indicates their nearly identical appearance and parallel operation. Note that a Preview tabbed panel is included at the bottom of the window for both web and local selections (circled below). For additional information on previewing selected objects before adding them to your view, see the Technical Guide entitled *System: Preview Map and Image Selections*.

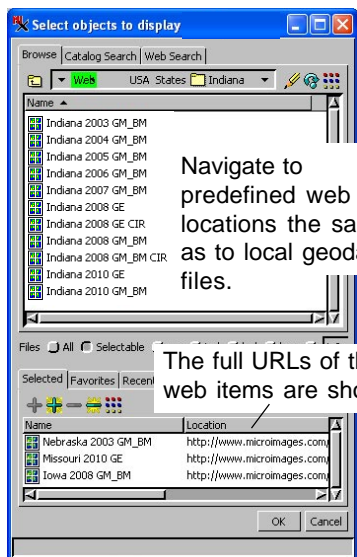
The types of Internet-based maps and images supported include:

- tilesets hosted on MicroImages' web site in Google Earth, Google Maps and Bing Maps, and NASA's World Wind formats;
- tilesets hosted on other public web sites;
- KML;
- ArcIMS; and
- WMS.

You can select multiple map and image layers in any combination from the web sources listed above and mix them with your local geodata objects for display or use in other TNT applications. You can navigate to MicroImages' predefined web locations just as though you were navigating the directories on your local computer. You can also enter the URL for any of the supported web layer types to select web locations that are not among the samples provided by MicroImages by clicking on the Enter Path/URL icon and entering the URL in the field to its left.



The location of web layers you select or locate can be added to your Favorites list and is remembered in the Recent list along with any locally selected objects. Right-click on a selected item and choose Add to Favorites to get it listed)) on the Favorites tabbed panel. Each type of web layer has different features, so their optional controls are discussed in separate Technical Guides.



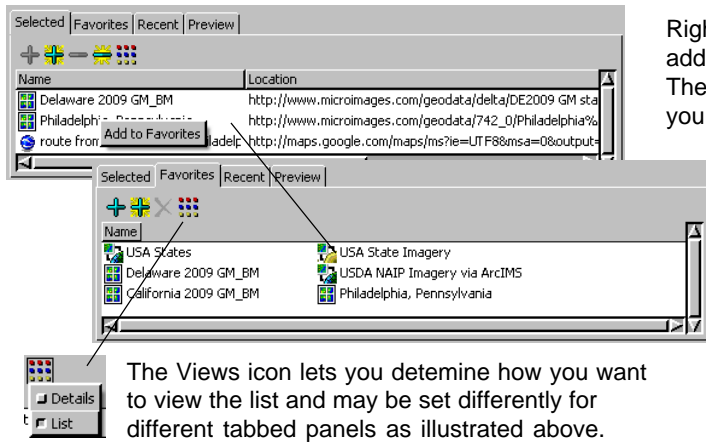
You can display layers created and saved in Google Maps if you do the following:

- Navigate to Google Maps in your browser (maps.google.com), sign in, click on My Places, and select the desired map;
 - Click on Link at the upper right of the window, copy the URL in the *Paste link in email or IM* field, paste it in a new browser tab (so you can see the entire URL), and add '&output=kml' to the end of the URL (without quotes);
- (over)

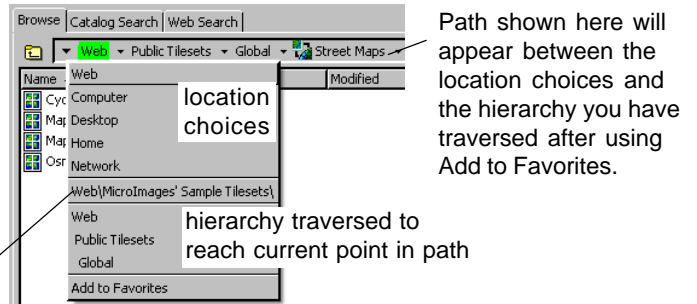


The Browse tabbed panel at the top of the Select Objects window is used for web, local, and intranet layers. The three Catalog tabbed panels are for use with geocatalogs you have previously generated from your local and intranet geodata. The Web Search tabbed panel is for use in locating WMS and ArcIMS web layers. All four of the tabbed panels in the lower part of the window are for use with any selected item regardless of type or local or web location.

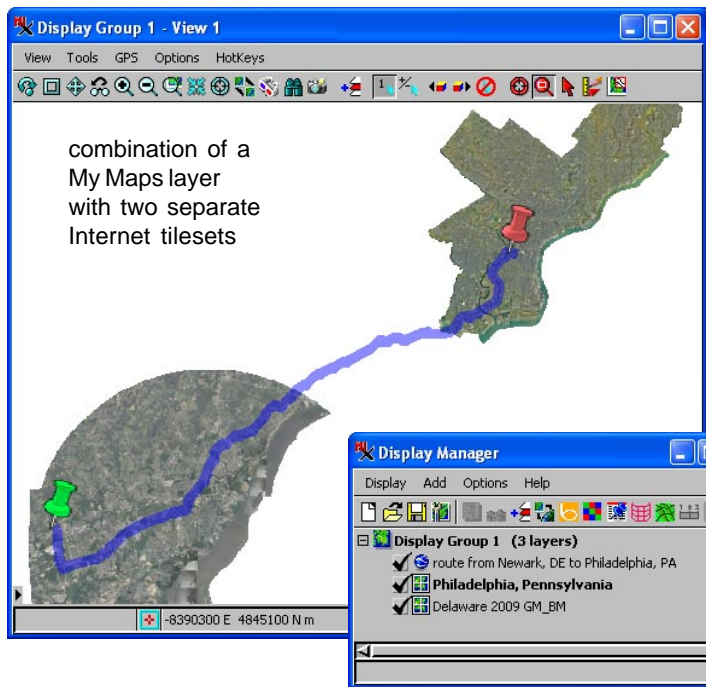
- Right-click in the URL field you pasted into and choose Select All, right-click again and choose Copy;
- In TNTmips, click on the Add Web Layer icon, click on the Enter Path/URL icon, paste the copied URL, then press <Enter>



Right-click on any of your selected items and choose Add to Favorites to add that specific Internet-based map or image to your list of favorites. The open panel automatically switches from Selected to Favorites and you can see the item you chose at the bottom of your Favorites list. You can also highlight locations in the top list in the Select Objects window, right-click and choose Add to Favorites to have them added to this same list.



If you choose Add to Favorites after clicking on the Locations arrow (to the right of the up-one-level icon), the path to your current level for selection becomes a favorite location that appears in the middle of this menu.



Both the 4-inch-resolution Philadelphia tileset and the 1-meter-resolution Delaware 2009 tileset are hosted as sample tilesets by MicroImages. The My Maps route began as directions in Google Maps and was saved as a My Maps layer with end points that are altered from the default.

