

Microsoft Bing Maps Reference Layer

Under MicroImages' license with Microsoft, you can add a Bing Maps global reference layer in three different styles to any view in TNTmips, TNTedit, or TNTview. The styles available via the Internet are

- Aerial, shown at the right;
- Roads, which includes labels; and
- Aerial with Labels, which is a combination, or hybrid, of Aerial and Road.

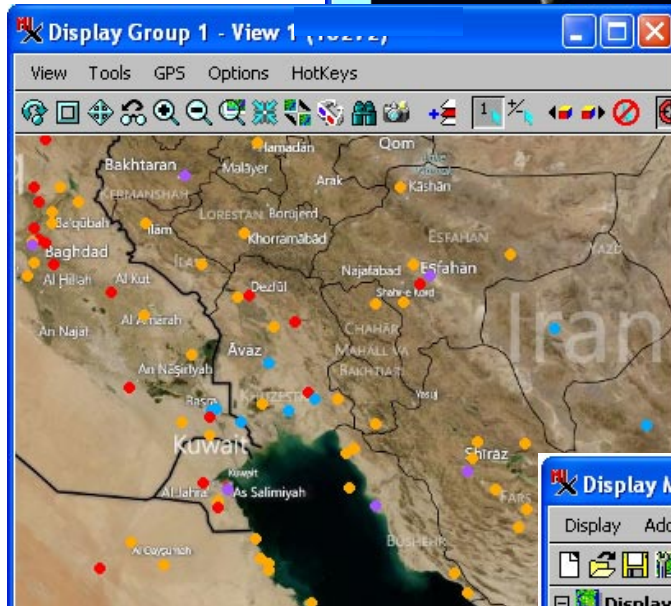
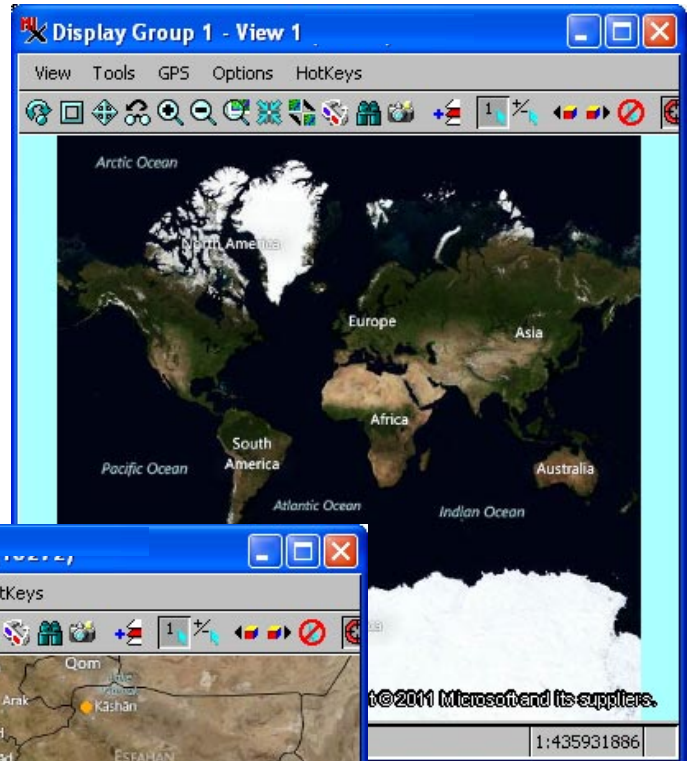
If you choose the roads or hybrid style, the labels for features will appear before the roads as you zoom in. Roads will appear if you zoom in far enough to resolve them.

You can add the Bing Maps reference layer to

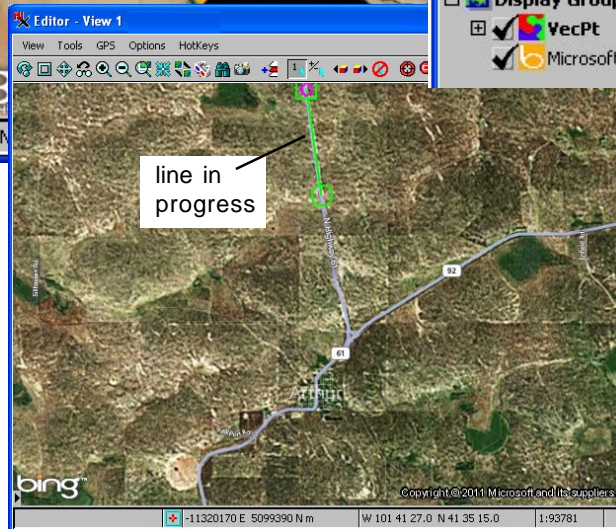
- see where any geodata is geolocated in any view,
- provide a reference frame for any layer or layout,
- create and update geometric elements in the Edit process,
- trace and draw features using the sketch tools, and
- add control points in the Geo-reference process.

When you add a Bing Maps reference layer, it is automatically converted to match the Coordinate Reference System and scale of other layers currently in the view. Adding this special global layer will not change the current extents of the view. In some applications you may want to automatically zoom to a global view when you add the Bing Maps reference layer. To make this your default operation, toggle off "Exclude from group extents" on the right mouse button menu in the Display/Layer Manager. This toggle is available for other layer types as well.

The first time you choose to add a Bing Maps reference layer in your TNT product, you are presented with Microsoft's Terms of Use license. Simply read these terms and click



Bing Aerial (above) and Aerial with Labels (left). The latter is displayed in combination with a local layer of global airport points.



A Bing layer is being used in the Editor to update a hiway map (left).

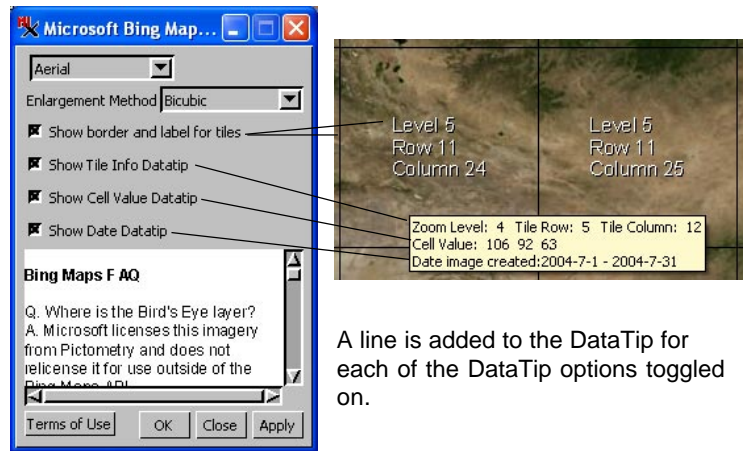
(over)

on the Accept button to initiate the use of this feature. The Microsoft license fee for the use of the Bing Maps reference layer is paid by MicroImages for registered users of the current release of the TNT professional products. The Bing Maps reference layer is not licensed or available for use with TNTmips Basic or TNTmips Free.

An important use of the Bing Maps reference layer is for adding control points to georeference your materials. Use the Layer Manager to add this reference layer in the Georeference process. Use it to select points to georeference a new map or image if you know where it is generally located or if it already has a few control points you want to refine.

Zoom into the Bing Maps reference layer to about the same map scale as the layer you want to georeference and proceed as you would with any other reference layer.

You can switch between styles for the Bing Maps reference layer already selected for display by clicking on its Layer Controls icon or by right-clicking and choosing Controls from the menu. The Controls also let you set the enlargement method to use (Nearest Neighbor, Bilinear, Bicubic, Bicubic Sharper, or Bicubic Smoother).



A line is added to the DataTip for each of the DataTip options toggled on.

Bicubic is the initial default, but your last choice is retained. The Layer Controls also provide a number of choices related to tiles and the desired DataTip(s) to show. The initial default is the Date DataTip. If you turn on additional DataTip options, they are retained for your next use of the Bing Maps reference layer. A Bing Maps FAQ and the ability to review the Terms of Use you agreed to the first time you chose to display a Bing Maps reference layer are also available from the Controls window.

