

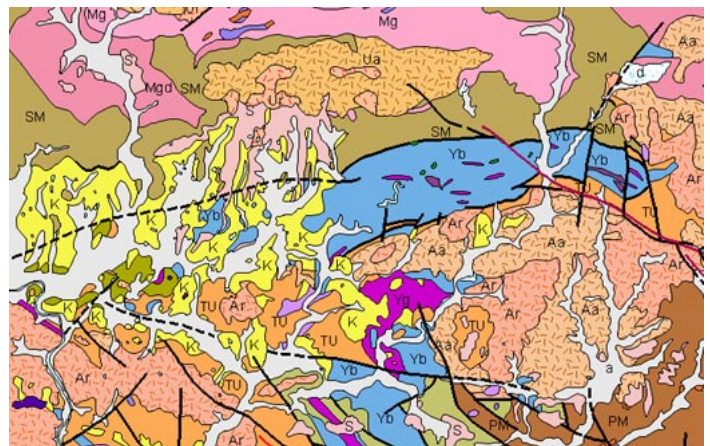
# Seamless Digital Geological Map of Japan

The Geological Survey of Japan AIST recently released a digital Seamless Geological Map of Japan that was compiled and prepared in TNTmips. The map compilation includes data for 124 quadrangles (1 degree of longitude by 40 minutes of latitude) that cover nearly all of Japan at a scale of 1:200,000. The digital maps are distributed on a pair of DVDs and include fully-styled vector maps in TNTmips Project Files. These vector maps are also provided in USGS Digital Line Graph and shapefile formats exported from TNTmips and as raster images of the styled map quadrangles in several image formats.



TNTmips was used to edit the raw vector maps after conversion from scans of the original paper quadrangle maps. Vector objects depicting geologic map polygons and fault lines were edited to provide continuity of geologic features at quadrangle boundaries and to update the maps with the latest geologic information. Polygon and line database attributes, text labels, and map styles were also constructed in TNTmips. A sample area of the styled vector map for one of the quadrangles is shown at reduced scale to the right.

The Seamless Geological Map of Japan is available for purchase from the Geological Survey of Japan ([http://riodb02.ibase.aist.go.jp/db084/main\\_e.html](http://riodb02.ibase.aist.go.jp/db084/main_e.html)).



Sample area from one of the Geological Map of Japan quadrangles shown at reduced scale.