

# Windows Desktop or the X Desktop

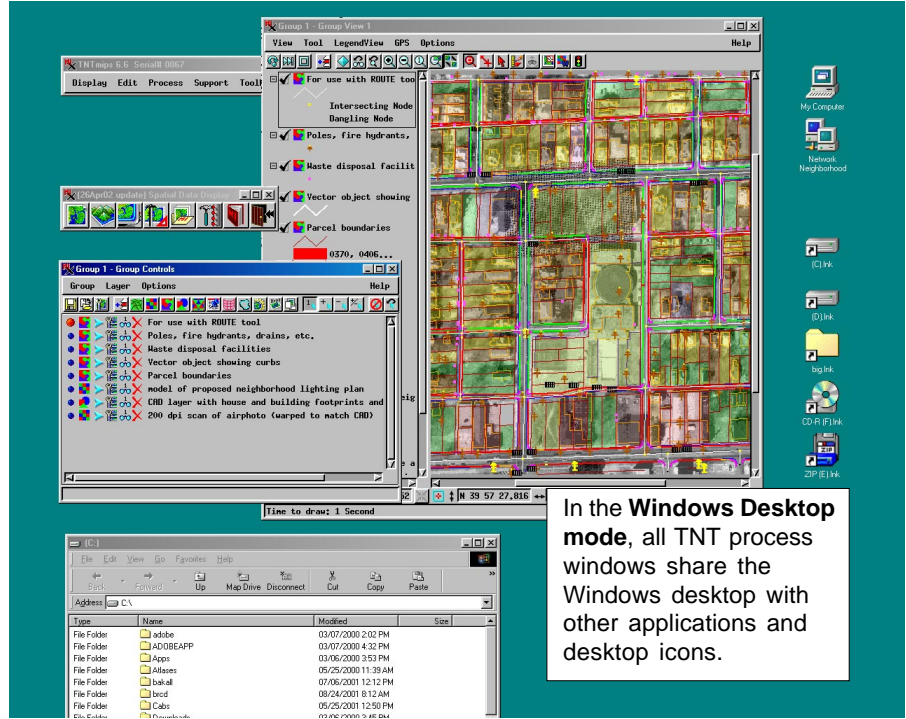
V6.70 now provides a choice in the appearance of your TNT workspace under Microsoft Windows. By default, TNT operates on the familiar **Microsoft Windows desktop** where every window opened by any TNT product appears as a separate window along with the desktop icons and other windows opened by other applications. These TNT windows open, close, resize, reposition, and behave like any other Microsoft windows; it is no longer apparent that the Microimages X server is managing them. You also still have the option of using the familiar **X desktop** which operates inside a single virtual workspace where you can organize all your process windows, and focus your attention on your geospatial activities.

## Windows Desktop

The default when you install V6.70 is to preserve your Microsoft Windows desktop. Previous versions of the TNT products always used the X virtual desktop. New MicroImages clients who start a TNT product now see their normal Windows desktop and use familiar techniques to manage their windows and processes.



The **Interface Type** dialog appears at startup so you can choose which desktop interface you want.



In the **Windows Desktop mode**, all TNT process windows share the Windows desktop with other applications and desktop icons.

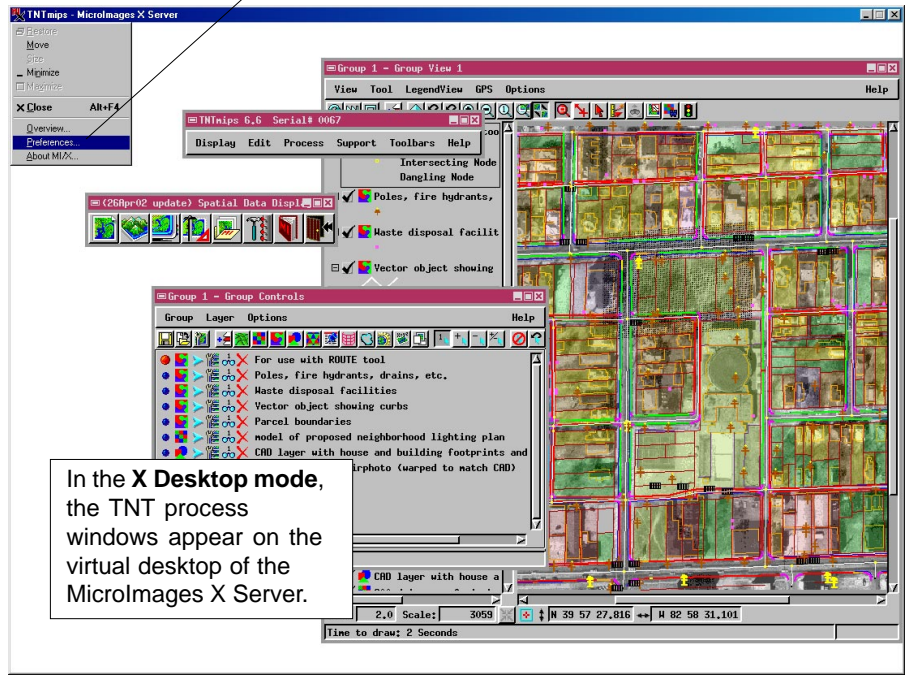


To set preferences, open the **MicroImages X Server Preferences** dialog either by selecting Preferences... from the MI/X process icon menu, or by clicking the MI/X icon in the Windows System Tray.

## X Desktop

Those who prefer to work with TNT's unique large, virtual, preemptive desktop and X windows can still do so. You simply need to change back to the X desktop mode after installing V6.70.

You can switch back and forth between these interface modes in the Interface Type dialog that opens at startup.



In the **X Desktop mode**, the TNT process windows appear on the virtual desktop of the MicroImages X Server.