

# Immersive Geospatial Analysis

Many of your geospatial analysis tasks in TNTmips can benefit from the extra screen real estate provided by a three-monitor system driven by the Matrox Parhelia display board (or a two-monitor system using this Matrox or one of the other dual-display boards).

You can view different combinations of your geodata layers simultaneously in multiple view windows (2D or 3D perspective) and still have room for control windows and analysis tool dialogs, without the need for overlapping or minimized windows.

## View geodata in 2D and 3D view windows.



2D View window



3D Perspective View window



Control windows and second 2D View window showing other layers.

## Edit geodata using 2D and 3D view windows.



Editor 3D View window

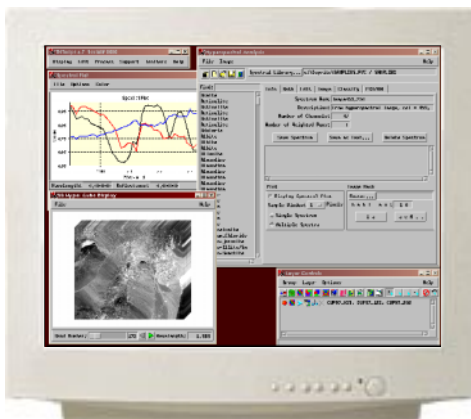


Editor 2D View window



Control windows and a 2D view of reference layers

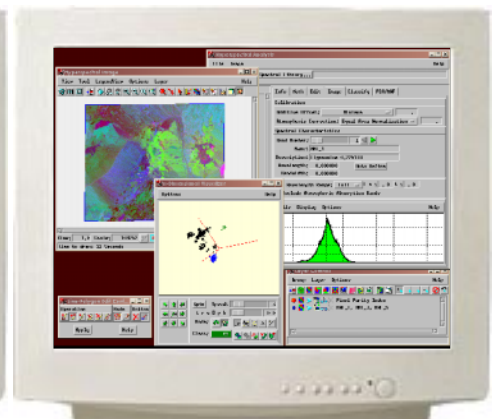
## Analyze hyperspectral images.



Controls, spectral plot, and hypercube display



Hyperspectral Analysis View window



Identifying potential end-member spectra for unmixing