

Setting Up Your Workspace Size

A large X Server gives you a large workspace: a *virtual TNT desktop* so you can use large View windows and move unused windows off the monitor's display area.

- **Large View Windows** Individual windows can be as large as the workspace itself, which is especially useful for very large View windows.
- **Move Unused Windows** Place interface components anywhere in the workspace, inside or outside the area visible on the display monitor. Move components that otherwise would clutter your display or be buried under other windows.

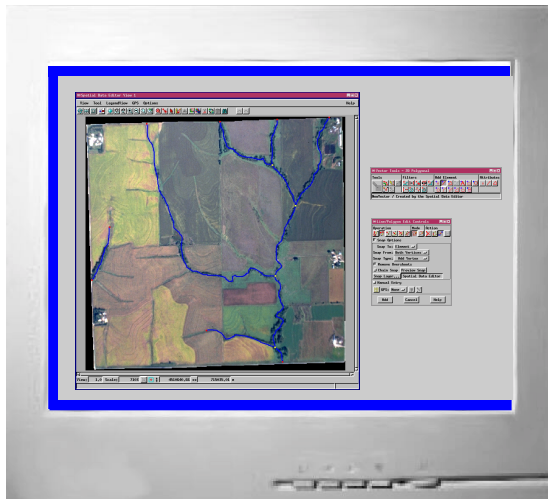


How large a View?

Every View window can be resized to any dimensions. You might want to use a very large View window in a large workspace to view a large image at full resolution. Use the **Resize To ...** selection on a View window's Options menu to open the Auto Resize To dialog.

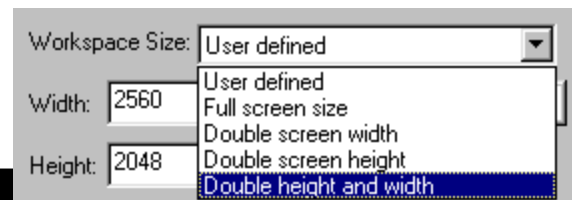
Consider, however, that every View window takes real memory. For example, each 2000 x 2000 View window needs 28 Mb of RAM (with layer transparency enabled).

64 Mb of RAM — Try Double Screen Width

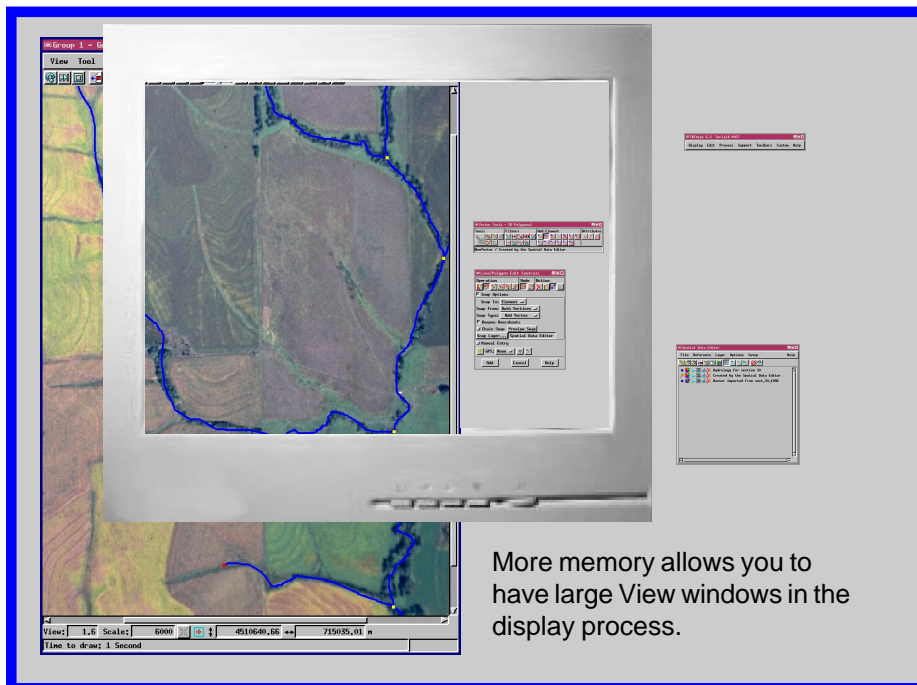


A larger workspace lets you spread out your work. Windows can be moved off to the side instead of being hidden under a pile of other windows.

A double-wide workspace gives you room to spread out your work. It is just like having dual monitors. You move around the large workspace with the red view box in the Workspace Overview window or with the scroll bars at the edges of your real view.

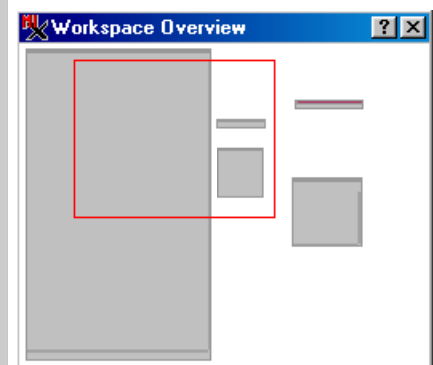


128 Mb of RAM — Try Double Height and Width



More memory allows you to have large View windows in the display process.

A large X workspace requires no more RAM than a smaller workspace. But when you have lots of RAM, you can benefit from very large View windows.



When the X Server is larger than the display, a **Workspace Overview window** lets you control the windows, dialogs, and interface elements it contains.

256 Mb of RAM or More — Try 4000 x 4000 or Larger