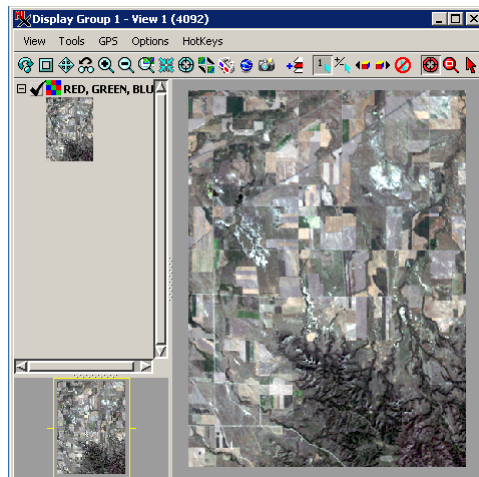
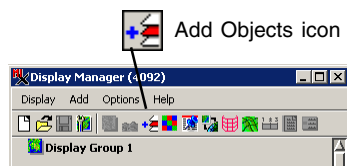


Quick-Add RGB Raster Sets

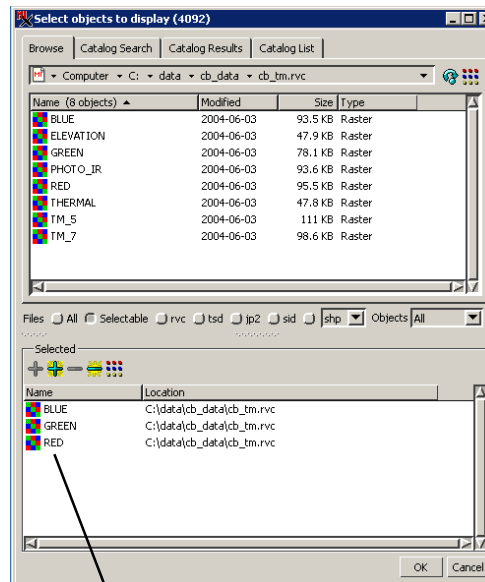
DID YOU KNOW . . . you can add one or more sets of raster objects as a single RGB layer by clicking on the same icon used to quick-add any type of single-object layer?

What Quick-Adding RGB Raster Sets Gives You

- Save time by adding RGB raster sets with a single click
- Add additional layer types to overlay with the RGB layer
- Automatic identification of red, green, and blue components using color name
- Ability to quick-add multiple RGB sets if they have different extents



The illustration above shows the three coextensive, coregistered rasters displayed as an RGB raster set.



When rasters are selected in any order, they are automatically displayed as an RGB raster set. The names of the rasters are used to determine the correct component.

How to Quick-Add RGB Raster Sets

- In the Display Manager window, click on the Add Objects icon.
- Select the raster objects you want to add.
- Click on the OK button.



WANT TO KNOW MORE?

See the Technical Guide entitled *Spatial Display:*
Quick-Adding RGB Raster Sets

